

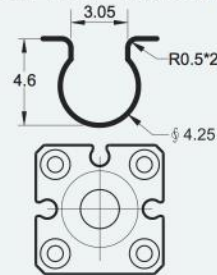


**SPECIFICALLY FOR SHORT-STROK CYLINDERS**  
Strong fixing strength

**AL-26 Series can replace AL-07, Series**

**GROOVE DIMENSION (SMC)**

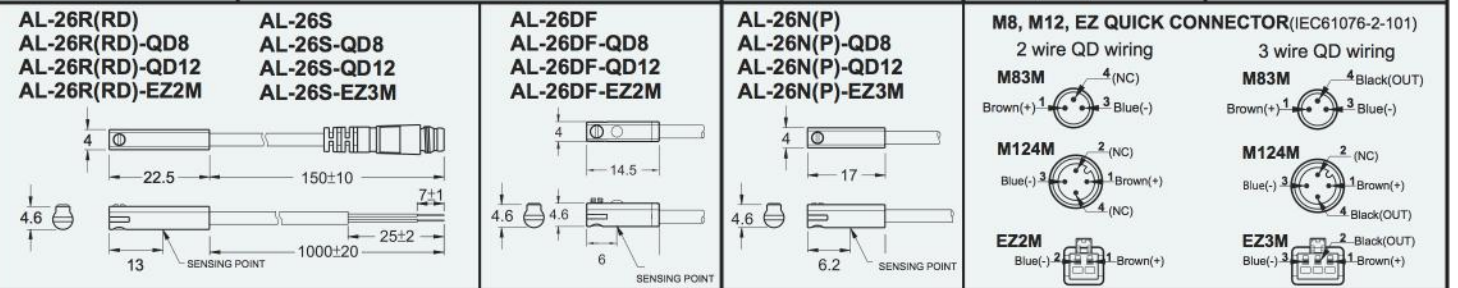
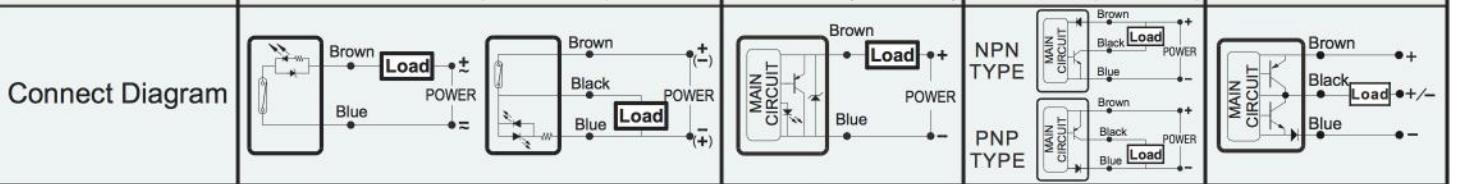
**PC+PBL CLAMP**  
(See page 69)



Apply to 6  $\phi$  to 63  $\phi$  Round Cylinder

## SPECIFICATION

TYPE	AL-26R	AL - 26RD	AL - 26DF	AL - 26N(P)	AL - 26S
CHARACTERISTIC					
SWITCHING LOGIC	SPST Normally Open	SPST Normally Open	Normally Open	Solid State Output, Normally Open	
SENSOR TYPE	Reed Switch	Reed Switch	2 Wire Solid State	NPN Current Sinking (PNP Current Sourcing)	NPN/PNP Automatic Detection
OPERATING VOLTAGE	5 ~ 120V DC/AC	5 ~ 30V DC	10 ~ 28V DC	5 ~ 30V DC	
SWITCHING CURRENT	0 ~ 100 mA	0 ~ 300 mA	1 ~ 50 mA	0 ~ 200 mA	0 ~ 100 mA
SWITCHING RATING	3.5 W Max.	3.5 W Max.	1.4 W Max.	6 W Max.	3.5 W Max.
CURRENT CONSUMPTION	—	10 mA Max. @ 24V	40 $\mu$ A Max. @ 24V	7.5 mA Max. @ 24V	
VOLTAGE DROP	2.5V Max. @ 100mA DC	0.1V Max. @ 300mA DC	2.65V Max. @ 50mA DC	0.5 V Max. @ 200 mA DC	1 V Max. @ 200 mA DC
LEAKAGE CURRENT	—	—	90 $\mu$ A Max. @ 28V	0.01 mA Max.	
INDICATOR	Red LED	Dual Yellow LED	Red LED	Red LED(Green LED)	Red LED
CABLE	2.9 $\phi$ , 2C, Grey Oil-Resistant PVC	2.9 $\phi$ , 3C, Black Oil-Resistant PVC	2.2 $\phi$ , 2C, Black Oil-Resistant PU	2.2 $\phi$ , 3C, Black Oil-Resistant PU	
SENSITIVITY	40 ~ 50 Gauss	40 ~ 50 Gauss	40 ~ 800 Gauss	40 ~ 800 Gauss	
SWITCHING FREQUENCY	1000 Hz	1000 Hz	1000 Hz	5000 Hz	
TEMPERATURE RANGE	-10 ~ 70 $^{\circ}$ C	-10 ~ 70 $^{\circ}$ C	-10 ~ 70 $^{\circ}$ C	-10 ~ 70 $^{\circ}$ C	
SHOCK	30 G	30 G	50 G	50 G	
VIBRATION	9 G	9 G	9 G	9 G	
ENCLOSURE CLASSIFICATION	IP 67 (EN60529)	IP 67 (EN60529)	IP 67 (EN60529)	IP 67 (EN60529)	
PROTECTION CIRCUIT	—		Surge Suppression	Power Reverse Polarity; Surge Suppression	
CE Certificate NO.	E8N 11 04 53334 005		No. E8N 1104 53334 004	E8N 11 04 53334 006	—
3C Certificate NO.	No. : 2004010305127433		—	—	—
CNEx Certificate NO.	CNEx16.2333X(ExnCIIT6GC)		CNEx16. 1850 (ExiallBT6Ga)	CNEx16. 1851 (ExiallBT6Ga)	—



- NOTE: 1. The max. operating voltage of AL-26R-QD8 is 60V AC/DC (Based on IEC61076-2-101).  
 2. Measuring standard target: 15.5 \* 8 \* 5t(Anisotropic Plastic Magnet).  
 3. Sin Wave / X, Y, Z 3 Directions /3 Times Each Direction / 11mS Each Time.  
 4. Double Amplitude 1.5mm / 10Hz~55Hz~10Hz(Sweep 1min) / X, Y, Z 3 Directions / 1Hour Each Time.  
 5. All trademarks used in this catalog are the property of their respective owners.  
 6. We reserve the right to make changes without notice.

