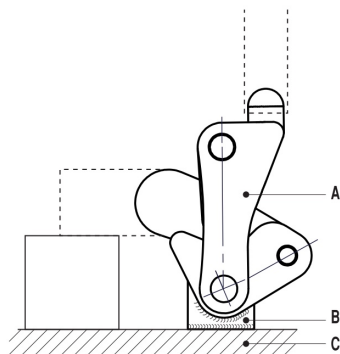
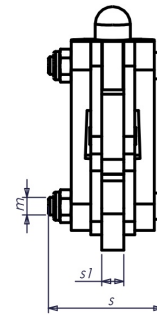
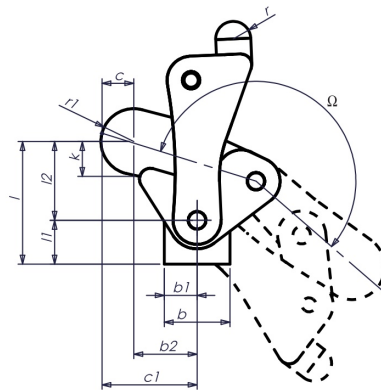
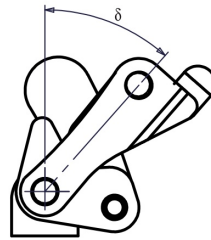


M30 Modulspanner-schweisssbar-schwenkbarer Fuß

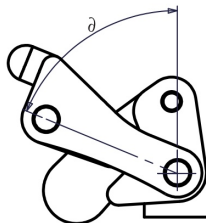
M30

Modular Toggle Clamps
with swivelling foot, welding version

Mechanism can be welded at an angle to its support. Reamed and case-hardened bearing bushes. Hardened, ground and permanently-lubricated pins. Clamp nuts on lever arm to vary friction in movement. Material: Steel, blued. Lever arm made of cast steel, blued.



Anleitung Schweissposition :
Teil "A" wird an Teil "B" geschweisst.
Teil "B" wird an "C" geschweisst



Size	F1 (kN)			
4	7.0	112	82	855
6	11.0	145	105	1600

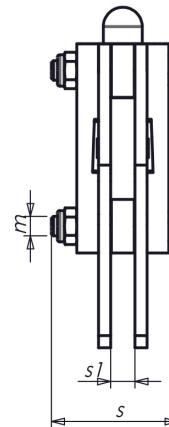
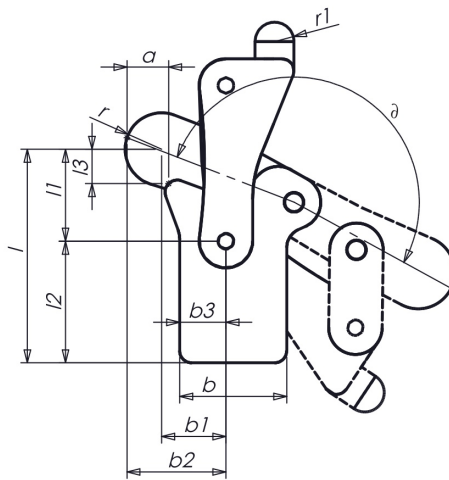
Size	b	b1	b2	c	c1	k	l	l1	l2	m	r	r1	s	s1	Ω	∂	δ
4	30	15	10	16	41	12	58	20	38	M8	8	15	52	10	200°	70°	40°
6	36	18	12	20	55	16	78	28	50	M10	11	18	60	12	200°	70°	40°

M32 Modulspanner-schweisbar-senkrechter Fuß

M32

Modular Toggle Clamps
with svertical foot, welding version

Mechanism can be welded at an angle to it's support. Reamed and case-hardened bearing bushes. Hardened, ground and permanently-lubricated pins. Clamp nuts on lever arm to vary friction in movement. Material: Steel, blued. Lever arm made of cast steel, blued.



Size	F1 (kN)			
4	7.0	112	82	970
6	11.0	182	106	1750

Size	a	b	b1	b2	b3	l	l1	l2	l3	m	r	r1	s	s1	∅
4	16	44	26	41	19	88	38	50	12	M8	15	8	52	10	190°
6	20	55	36	55	28	114	50	64	16	M10	18	11	60	12	190°

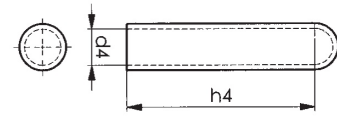
MS30 Modulspanner - ZUBEHÖR

MS30/16

Hand Grip
Red, oil-resitant plastic



Size	d4 x h4	g
4	18 x 90	20
6	22 x 100	28

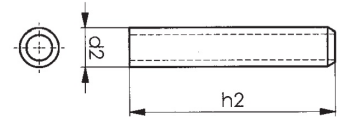


MS30/17

Lever Arm Tube - Short Type
For welding, chamfered to protect operator's hands.
Material steel, blued



Size	d2 x h2	g
4	18 x 95	104
6	22 x 105	150

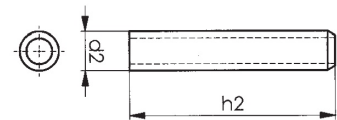


MS30/18

Lever Arm Tube - Long Type
For welding, chamfered to protect operator's hands.
Material steel, blued



Size	d2 x h2	g
4	18 x 120	132
6	22 x 150	210

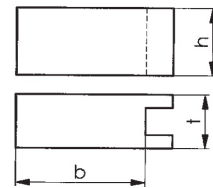


MS30/20

Clamping Arm Extension
For welding, slotted. Material steel, blued



Size	b x h x t	g
4	48 x 25 x 20	210
6	60 x 30 x 25	390

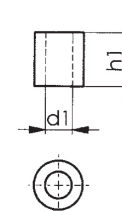


MS30/30

Clamping Screw Holder
For welding, thick-walled. Material steel, blued



Size	d1 x h1	g
4	12.1 x 24	50
6	12.1 x 30	65



MS30/10

Baseplate
For welding, with mounting holes. Material steel, blued



Size	c	c3	d	m	l	s	c3	g
4	25	40	6.5	35	50	8	40	112
6	40	60	8.5	30	50	8	60	170

