

ASC – Pneumatic Swing Clamp



Product Features :

- compact series for use in tight spaces
- Body material: aluminium alloy, hard coat
- lightweight, robust and reliable
- high durability
- Holding capacity 0.24kN to 2.0kN
- Complete with clamping arm
- Double acting
- Operating pressure : 4 to 7 bar
- Various mounting and piping types
- CAD-Dfiles on request !

MODEL	CLAMPING FORCE AT 7 kgf/cm ² (kgf)	SWING STROKE (mm)	CLAMPING STROKE(mm)	TOTAL STROKE(mm)	CYLINDER CAPACITY CLAMP(cm ³)	CYLINDER CAPACITY UNCLAMP(cm ³)	EFF.PISTON AREA CLAMP(cm ²)	EFF.PISTON AREA UNCLAMP(cm ²)	RANGE OF TEMPERATURE(°C)
ASC-25	24	9	13	22	7.41	12.28	3.37	4.91	-10~+60°C
ASC-32	42	11	15/30	26/41	15.68/24.72	20.9/32.96	6.03	8.04	-10~+60°C
ASC-40	74	11	15/30	26/41	27.43/43.26	32.66/51.5	10.55	12.56	-10~+60°C
ASC-50	116	13	17/34	30/47	49.47/77.5	58.89/92.26	16.49	19.63	-10~+60°C
ASC-63	196	13	17/34	30/47	84.06/131.69	93.48/146.45	28.02	31.16	-10~+60°C

Ordering Indication

ASC – MF 25 S R x 90 E P
 ① ② ③ ④ ⑤ ⑥ ⑦ ⑧

①	ASC	Series	ASC
②	MF	Mounting and piping types	Blank: Standard Line type MF: Manifold with Flow Control MS: magnetic type FA: Upper Flange type TB: Threaded body
③	25	Cylinder inside diameter	Φ25, Φ32, Φ40, Φ50, Φ63 (mm)
④	S	Clamping arm type	S: Single side arm D: Double side arm
⑤	R	Rotating direction	R: Turn right L: Turn left N: 0° (No swing)
⑥	90	Rotating angle	45°, 60°, 90° (±2°)
⑦	E	Stroke extension	(optional)
⑧	P	Precision position	Locating pin, to improve the repeat precision of rotation angle (optional)

Line Type and Manifold Type

Rohrleitungsanschluss / Line-Type

ROHRLEITUNGSANSCHLUSS S
LINE TYPE S

Single side swing clamp
einseitiger Spannarm

ROHRLEITUNGSANSCHLUSS D
LINE TYPE D

Double side swing clamp
doppelseitiger Spannarm

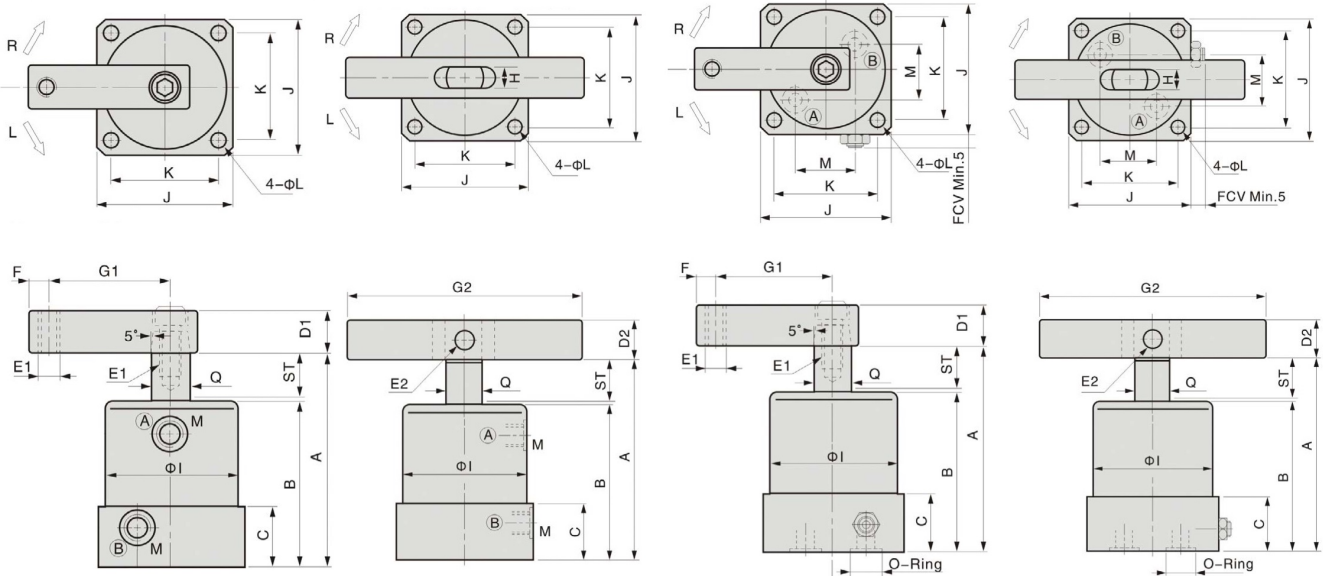
O-Ringanschluss / Manifold Type

O-RINGANSCHLUSS S
MANIFOLD TYPE S

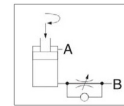
Single side swing clamp
einseitiger Spannarm

O-RINGANSCHLUSS D
MANIFOLD TYPE D

Double side swing clamp
doppelseitiger Spannarm



(A) Clamping port (B) Unclamping port



Unit:mm

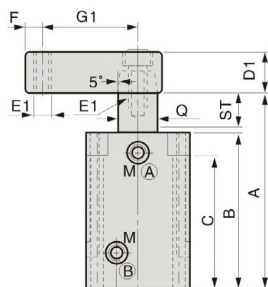
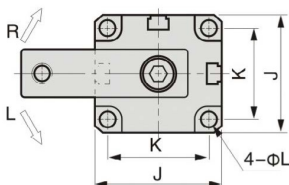
MODEL	ST: Swing/ Clamping	鬆開狀態 A Unclamp	B	C	D1	D2	E1	E2	F	G1	G2	H	ΦI	J	K	L	M	O-RING	Q
ASC-25	22:9/13	89	65	23	□ 16	-	M6×1.0	-	6	35	-	-	Φ35	38	30	Φ4.6	M5×0.8	-	Φ14
ASC-32	26:11/15 41:11/30	108 138	78 93	28	□ 19	□ 19	M8×1.25	Φ8	8	50	140	9	Φ46	50	40	Φ5.6	PT1/8	-	Φ16
ASC-40	26:11/15 41:11/30	108 138	78 93	28	□ 19	□ 19	M8×1.25	Φ8	8	55	140	9	Φ55	60	48	Φ6.8	PT1/8	-	Φ16
ASC-50	30:13/17 47:13/34	124 158	90 107	31	□ 25	□ 22	M10×1.5	Φ8	10	60	160	10	Φ65	70	57	Φ6.8	PT1/8	-	Φ20
ASC-63	30:13/17 47:13/34	124 158	90 107	31	□ 25	□ 22	M10×1.5	Φ8	10	70	160	10	Φ78	83	67	Φ9	PT1/8	-	Φ20
ASC-MF32	26:11/15	108	78	22	□ 19	□ 19	M8×1.25	Φ8	8	50	140	9	Φ46	50	40	Φ5.6	19	P7	Φ16
ASC-MF40	26:11/15	108	78	22	□ 19	□ 19	M8×1.25	Φ8	8	55	140	9	Φ55	60	48	Φ6.8	23	P7	Φ16
ASC-MF50	30:13/17	124	90	25	□ 25	□ 22	M10×1.5	Φ8	10	60	160	10	Φ65	70	57	Φ6.8	28	P9	Φ20
ASC-MF63	30:13/17	124	90	25	□ 25	□ 22	M10×1.5	Φ8	10	70	160	10	Φ78	83	67	Φ9	32	P9	Φ20

MS Magnetic Type

MS mit Positionsabfrage - magnetic type

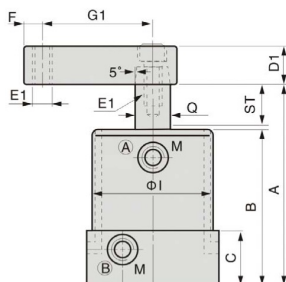
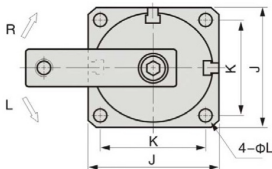
MS25S

Single side swing clamp
einseitiger Spannarm



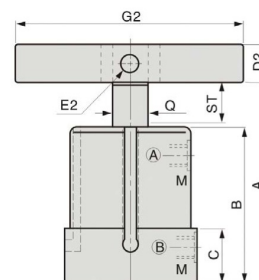
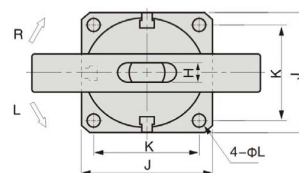
MS32S-63S

Single side swing clamp
einseitiger Spannarm



MS32D-63D

Double side swing clamp
doppelseitiger Spannarm



(A) Clamping port (B) Unclamping port

MODEL	ST: Swing/ Clamping	鬆開狀態 A Unclamp	B	C	D1	D2	E1	E2	F	G1	G2	H	φI	J	K	L	M	Q
ASC-MS25	22:9/13	94	70	60	□ 16	-	M6×1.0	-	6	35	-	-	Φ35	38	30	Φ4.6	M5×0.8	Φ14
ASC-MS32	26:11/15	113	83	28	□ 19	□ 19	M8×1.25	Φ8	8	50	140	9	Φ46	50	40	Φ5.6	PT1/8	Φ16
ASC-MS40	26:11/15	113	83	28	□ 19	□ 19	M8×1.25	Φ8	8	55	140	9	Φ55	60	48	Φ6.8	PT1/8	Φ16
ASC-MS50	30:13/17	129	95	31	□ 25	□ 22	M10×1.5	Φ8	10	60	160	10	Φ65	70	57	Φ6.8	PT1/8	Φ20
ASC-MS63	30:13/17	129	95	31	□ 25	□ 22	M10×1.5	Φ8	10	70	160	10	Φ78	83	67	Φ9	PT1/8	Φ20

Top Flange Type and Threaded Body Type

Flansch oben / Flanged type

Einschraubversion / Threaded body

FA - S

FA - D

TB - S

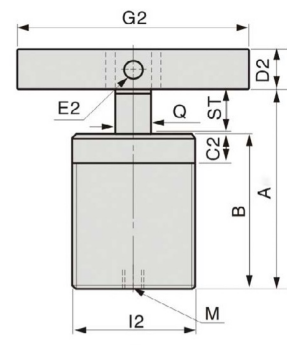
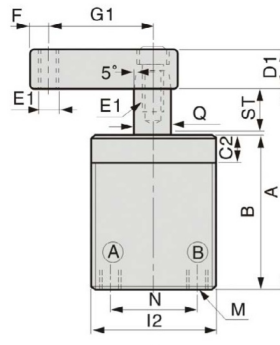
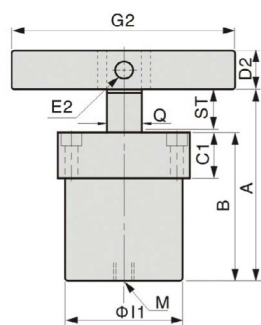
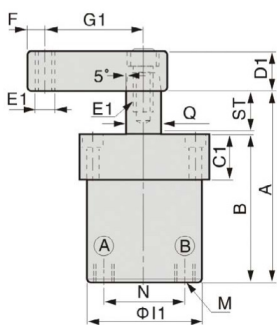
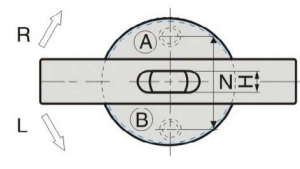
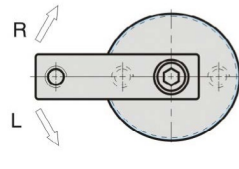
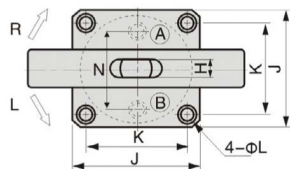
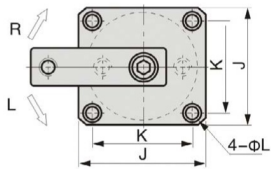
TB - D

Single side swing clamp
einseitiger Spannarm

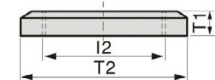
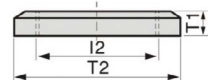
Double side swing clamp
doppelseitiger Spannarm

Single side swing clamp
einseitiger Spannarm

Double side swing clamp
doppelseitiger Spannarm



Ⓐ Clamping port Ⓑ Unclamping port



Unit:mm

Unit:mm

MODEL	ST: Swing/Clamping	鬆開狀態 A Unclamp	B	C1	C2	D1	D2	E1	E2	F	G1	G2	H	φ11	φ12	J	K	L	M	N	T1×2PCS	T2	Q
ASC-FA32 ASC-TB32	26:11/15	108	78	22	12	□ 19	□ 19	M8×1.25	φ8	8	50	140	9	φ46	M50×1.5	50	40	φ5.6-φ9×5.5D	PT1/8	32	11	φ70	φ16
ASC-FA40 ASC-TB40	26:11/15	108	78	22	12	□ 19	□ 19	M8×1.25	φ8	8	55	140	9	φ55	M55×1.5	60	48	φ6.8-φ10.5×6.5D	PT1/8	40	11	φ75	φ16
ASC-FA50 ASC-TB50	30:13/17	124	90	25	15	□ 25	□ 22	M10×1.5	φ8	10	60	160	10	φ65	M65×1.5	70	57	φ6.8-φ10.5×6.5D	PT1/8	50	12	φ85	φ20
ASC-FA63	30:13/17	124	90	25	-	□ 25	□ 22	M10×1.5	φ8	10	70	160	10	φ78	-	83	67	φ9-φ14×9D	PT1/8	63	-	-	φ20