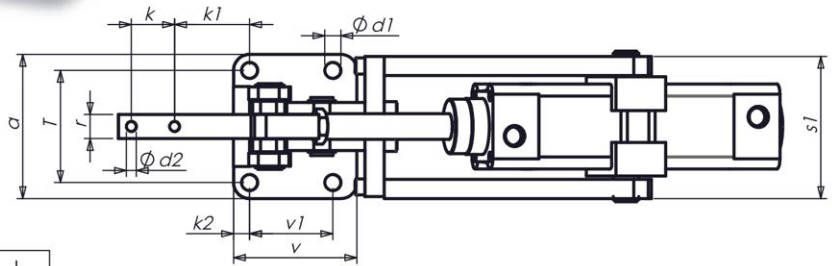
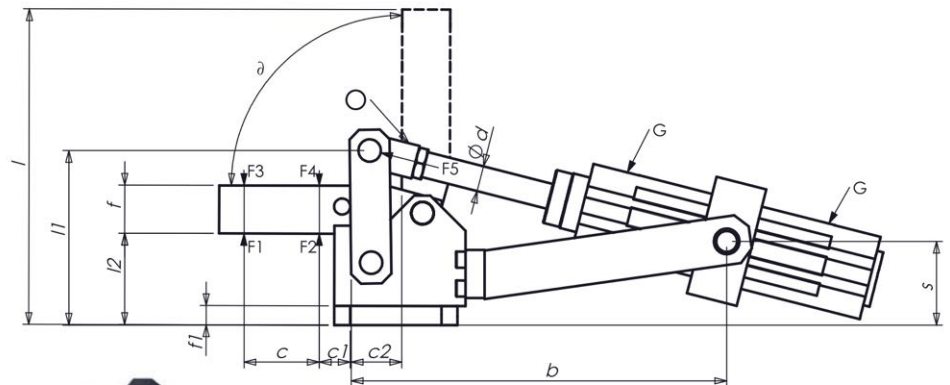


P60 Schwerer Pneumatikspanner-Horizontaler Zylinder

P60

Heavy pneumatic toggle clamp

With horizontal cylinder attachment
With swivel mounting and adjustable end position cushioning.
Magnetic piston for end position monitoring.
Tempering steel, burnished.
The axle bolts running in bearing bushes are tempered, ground and locked with circlips.
Clamp is ready for installation and consists of.
Toggle clamp element P61



Größe Size	F1*** (kN)	F2 (kN)	F3* (kN)	F4* (kN)	F5 (kN)	hs**			
4	6	9	1.5	2.2	0.75	1.0	122	416	5500
6	12	18	2.5	3.5	1.00	1.8	147	480	7800
8	20	30	4.0	6.0	1.80	4.3	196	580	17800

*F3 + F4 = Max. Haltekraft bei 6 / Max. Holding capacity at 6 bar
**hs = Luftverbrauch pro Doppelhub bei 6 bar (dm³) / Air consumption per double stroke at 6 bar (dm³)
***F1 / F2 = Haltekraft

Größe/Size	a	b	c	c1	c2	d	d1	d2	f	f1	r	k	k1	k2	o	l	l1	l2	s	s1	T	v	v1	delta	Zylinder/cylinder Strok HUB Kolben- durchmesser	G	
4	90	235	54	20	32	16	11	6.2	30	12	15	27	47	10	M6	76	109	57	53	87.5	70	77	52	90°	80	40	G1/4
6	105	280	60	21	30	20	11	8.2	40	12	30	26	53	11	M8	97	129	61	55	101	83	85	55	90°	100	50	G1/4
8	135	320	95	22	47	20	13	8.7	60	12	30	40	69.5	12.5	M12x12.5	198	176	86	78	114.5	111	112.5	80	90°	120	63	G3/8

Kolbendurchmesser x = F5 : Notwendiges Zylinderdurchmesser für die angegebene Kraft bei 6 bar