

## PSC – Pneumatic Swing Clamp



### Product Features :

- compact series for use in tight spaces
- Body material: aluminium alloy, hard coat
- lightweight, robust and reliable
- high durability
- Holding capacity 0.24kN to 2.0kN
- Complete with clamping arm
- Double acting
- Operating pressure : 4 to 7 bar
- Various mounting and piping types
- CAD-Dfiles on request !

### PSC Pneumatischer Schwenkspanner - Pneumatic Swing Clamp

Max. Betriebsdruck 7 bar  
Min. Betriebsdruck 4 bar  
doppel wirkend

Max: operating pressure 7bar  
Min: operating pressure 4bar  
Double acting

Model No.	Spannkraft bei 7 bar (KN)	Schwenkhub (mm)	Spannhub (mm)	Gesamthub (mm)	Ölbedarf Spannen (cm³)	Ölbedarf Entspannen (cm³)	eff. Kolbenfläche Spannen (cm²)	eff. Kolbenfläche Entspannen (cm²)	Betriebs-temperatur (°C)
PSC-25	0,24	12	12	24	11,78	8,09	4,91	3,37	-10~+60C
PSC-32	0,43	12	12	24	19,30	14,47	8,04	6,03	
PSC-40	0,75	12	12	24	30,14	25,32	12,56	10,55	
PSC-50	1,18	14	14	28	54,96	46,17	19,63	16,49	
PSC-63	2,00	15	15	30	93,48	84,06	31,16	28,02	
Model No.	Clamping force at 7 bar (KN)	Swing stroke (mm)	Clamping stroke (mm)	Total stroke (mm)	Cylinder capacity clamp (cm³)	Cylinder capacity unclamp (cm³)	eff.piston area clamp (cm²)	eff.piston area unclamp (cm²)	Range of temperature (°C)

#### Features:

When the piston push down, the clamping arm will rotate to the design angle, then push down on straight line hold the workpiece.

You had better install a flow control valve to adjust the acting speed, and don't clamping workpiece when the clamp is running, Otherwise will be easy to damage the body and the spare parts.

The material of cylinder body is aluminum alloy, surface processed with hardening and internal face is smooth,so the service life of product is long.

#### Note:

When you need to increase the length of the clamping arm, please don't exceed 1.5 times of the original length.

#### Achtung :

Eine eventuelle Verlängerung des Spannarms darf nicht das 1,5-fache der Originallänge überschreiten.

Nur mit geölter und gefilterter Luft verwenden !

Optional mit Schweißschutz-Zubehör erhältlich !

### Ordering Indication

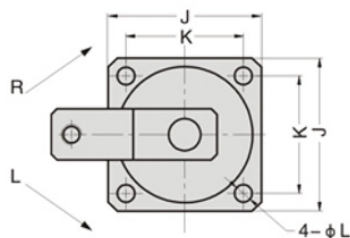
PSC – MF 25 S R x 90 W P  
① ② ③ ④ ⑤ ⑥ ⑦ ⑧

①	PSC	Series	PSC
②	MF	Mounting and piping types	Leer: Standard Line type M: Manifold piping type MF: Manifold with Flow Control FA: Upper Flange type TB: Threaded body
③	25	Cylinder inside diameter	Φ25, Φ32, Φ40, Φ50, Φ63 (mm)
④	S	Clamping arm type	S: Single side arm D: Double side arm
⑤	R	Rotating direction	R: Turn right L: Turn left N: 0° (No swing)
⑥	90	Rotating angle	45°, 60°, 90°
⑦	W	Welding accessory	W (optional)
⑧	P	Precision position	Locating pin, to improve the repeat precision of rotation angle (optional)

**Line Type**

**LINE TYPE - S**

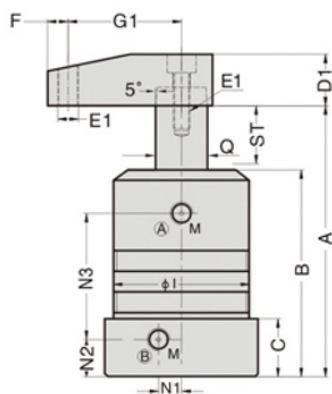
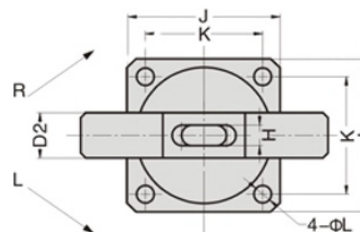
Single side swing clamp  
**einseitiger Spannarm**



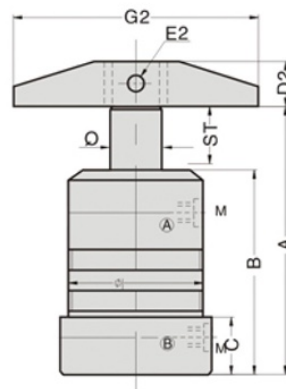
**Standard-Typ**

**LINE TYPE-D**

Double side swing clamp  
**doppelseitiger Spannarm**



- ▼ (A) 夹持油孔 Clamping port
- (B) 放鬆油孔 Unclamping port



Dimension table

Unit:mm

ITEM MODEL	ST: Swing/Clamping	A Unclamping	B	C	D1	D2	E1	E2	F	G1	G2	H	φI	J	K	L	M	N1	N2	N3	Q	O-Ring
<b>PSC-25</b>	24:12/12	98	66,5	23	□16	□19	M6	φ6	8	30	100	9	φ35	40	31	φ4.5	M5	7,5	13	38	φ14	-
<b>PSC-32</b>	24:12/12	101,5	71	23	□19	□19	M8	φ8	9	50	100	9	φ50	54	44	φ6.5	PT1/8	11,5	14,5	44,5	φ16	-
<b>PSC-40</b>	24:12/12	107	75	27	□19	□19	M8	φ8	9	50	100	9	φ55	58	48	φ6.5	PT1/8	11	17	46	φ16	-
<b>PSC-50</b>	28:14/14	114,5	80	26	□25	□22	M10	φ8	10	70	120	10	φ65	69	55	φ8.5	PT1/8	17	17,5	50,5	φ20	-
<b>PSC-63</b>	30:15/15	121	86,5	30	□25	□22	M10	φ8	10	70	120	10	φ75	82	64	φ8.5	PT1/8	21,8	21	53	φ20	-

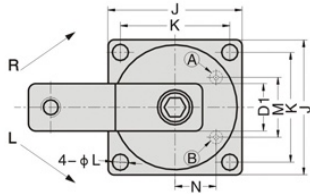
Manifold Type

Manifold O-Ringanschluss M

Manifold O-Ring mit Flow Control MF

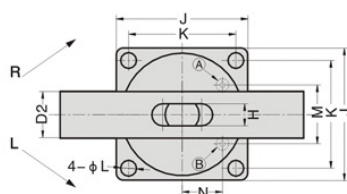
► M-S

Single side swing clamp  
einseitiger Spannarm



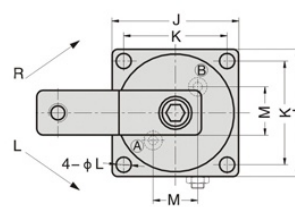
► M-D

Double side swing clamp  
doppelseitiger Spannarm



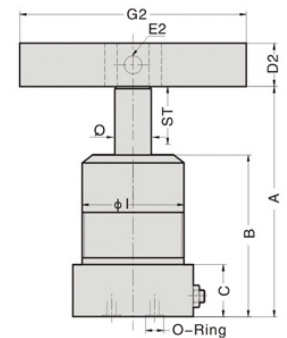
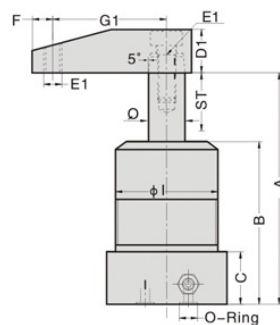
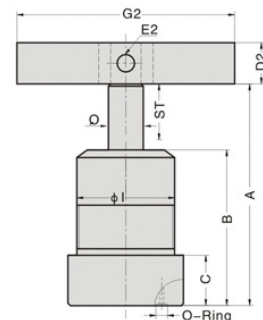
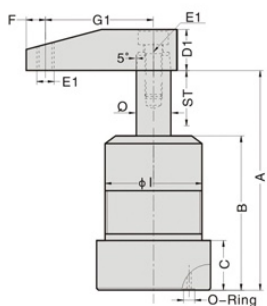
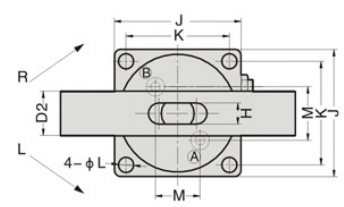
► MF-S

Single side swing clamp  
einseitiger Spannarm



► MF-D

Double side swing clamp  
doppelseitiger Spannarm



► (A) 夹持油孔 Clamping port (B) 放鬆油孔 Unclamping port

Dimension table

Unit:mm

ITEM MODEL	ST: Swing/Clamping	A Unclamping	B	C	D1	D2	E1	E2	F	G1	G2	H	φI	J	K	L	M	N	O-Ring	Q
PSC-M32	24:12/12	101,5	71	23	□19	□19	M8	φ8	9	50	100	9	φ50	54	44	φ6.5	24	16,5	S4	φ16
PSC-M40	24:12/12	107	75	27	□19	□19	M8	φ8	9	50	100	9	φ55	58	48	φ6.5	26	20	S3	φ16
PSC-M50	28:14/14	114,5	80	26	□25	□22	M10	φ8	10	70	120	10	φ65	69	55	φ8.5	30	25	S3	φ2φ
PSC-M63	30:15/15	121	86,5	30	□25	□22	M10	φ8	10	70	120	10	φ75	82	64	φ8.5	40,5	28	S4	φ2φ

Dimension table

Unit:mm

ITEM MODEL	ST: Swing/Clamping	A Unclamping	B	C	D1	D2	E1	E2	F	G1	G2	H	φI	J	K	L	M	Q	O-Ring
PSC-MF32	24:12/12	101,5	71	23	□19	□19	M8	φ8	9	50	100	9	φ50	54	44	φ6.5	19	φ16	P7
PSC-MF40	24:12/12	107	75	27	□19	□19	M8	φ8	9	50	100	9	φ55	58	48	φ6.5	23	φ16	P7
PSC-MF50	28:14/14	114,5	80	26	□25	□22	M10	φ8	10	70	120	10	φ65	69	55	φ8.5	28	φ20	P9
PSC-MF63	30:15/15	121	86,5	30	□25	□22	M10	φ8	10	70	120	10	φ75	82	64	φ8.5	32	φ20	P9

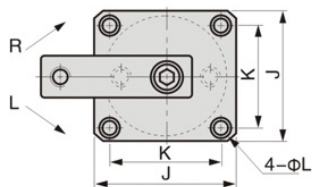
Top Flange Type and Threaded Body Type

Flansch oben FA

Einschraubversion TB

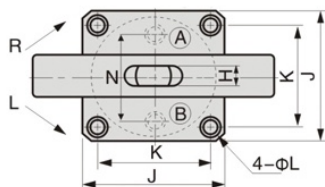
FA-S

Single side swing clamp  
einseitiger Spannarm



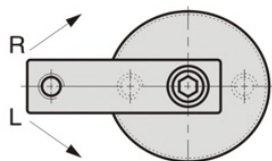
FA-D

Double side swing clamp  
doppelseitiger Spannarm



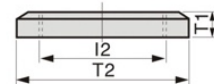
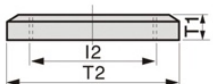
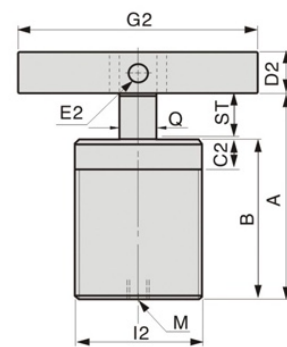
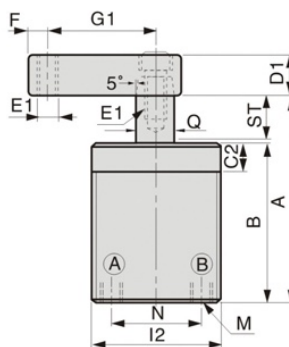
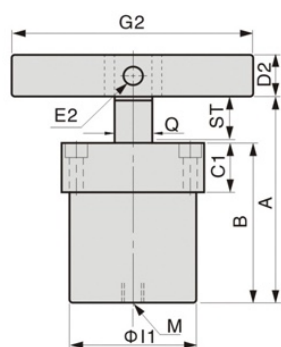
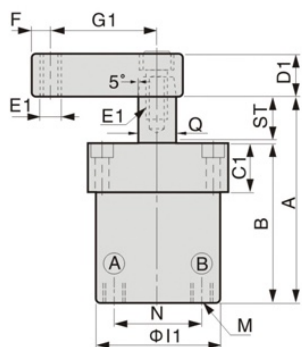
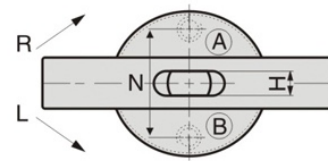
TB-S

Single side swing clamp  
einseitiger Spannarm



TB-D

Double side swing clamp  
doppelseitiger Spannarm



Ⓐ 夹持气孔 Clamping port Ⓑ 放鬆气孔 Unclamping port

Dimension table

Unit:mm

ITEM MODEL	ST: Swing/Clamping	A Unclamping	B	C1	C2	D1	D2	E1	E2	F	G1	G2	H	φI1	I2	J	K	L	M	N	T1×2PCS	T2	Q
PSC-FA32 PSC-TB32	26:11/15	108	78	22	12	□19	□19	M8	φ8	9	50	100	9	φ50	M50×1.5	54	44	φ5.6-φ9×5.5D.	PT1/8	32	11	φ70	φ16
PSC-FA40 PSC-TB40	26:11/15	108	78	22	12	□19	□19	M8	φ8	9	50	100	9	φ55	M55×1.5	60	48	φ6.8-φ10.5×6.5D.	PT1/8	40	11	φ75	φ16
PSC-FA50 PSC-TB50	30:13/17	124	90	25	15	□25	□22	M10	φ8	10	70	120	10	φ65	M65×1.5	69	55	φ6.8-φ10.5×6.5D.	PT1/8	50	12	φ85	φ20
PSC-FA63	30:3/17	124	90	25	-	□25	□22	M10	φ8	10	70	120	10	φ75	-	82	64	φ9-φ14×9D.	PT1/8	63	-	-	φ20